

# How to retrieve datalinks from a selection of granules using TOPCAT

- [Example of SPICAM service](#)
  - [Load a subset of your EPN-TAP service on topcat](#)
    - [Using topcat TAP access](#)
    - [Using VESPA portal](#)
  - [Use the datalink service](#)
    - [Use the datalink service on one row](#)
    - [Use the datalink service on a whole sample](#)
  - [To go further](#)

## Example of SPICAM service

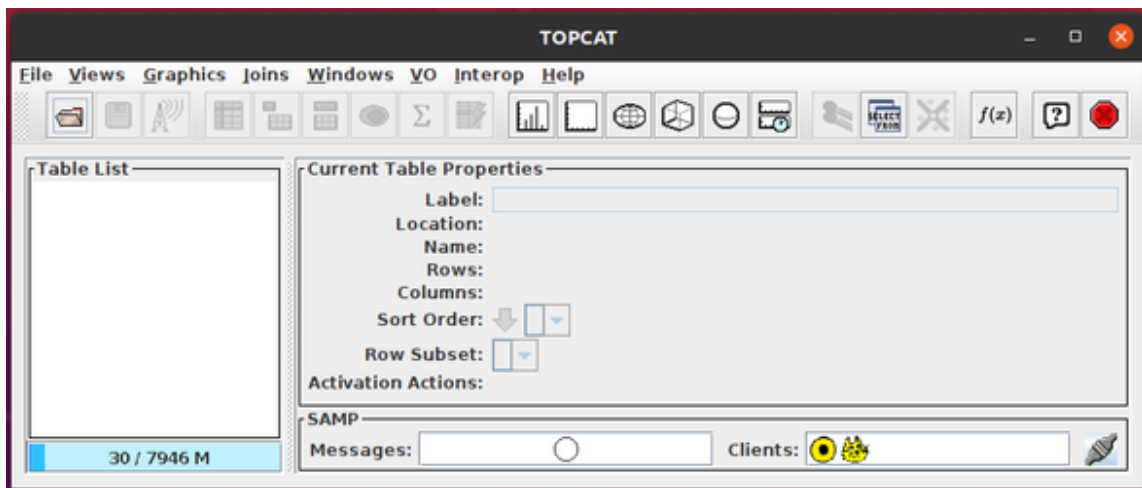
On this example, we want to gather votables from the datalinks of a subsection of the 'EPN-TAP service 'spicam' using TOPCAT.


We can only gather datalinks with a common name at a time.

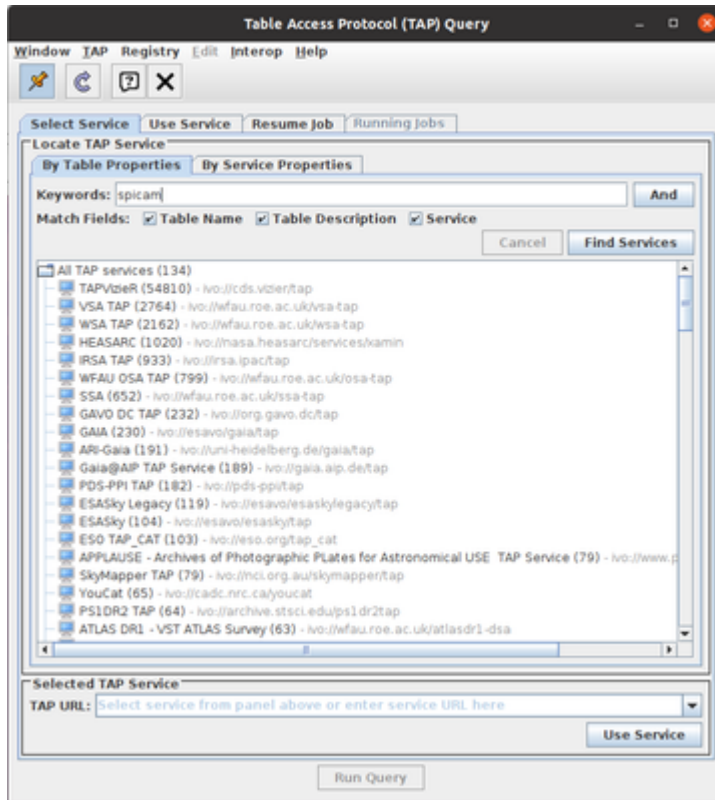
### Load a subset of your EPN-TAP service on topcat

#### Using topcat TAP access

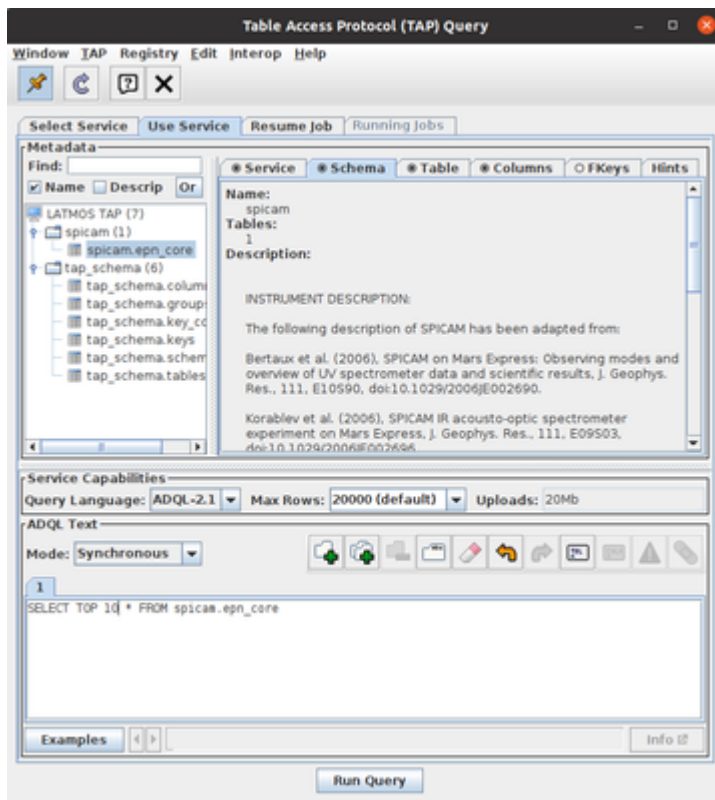
- Open [Topcat](#) software



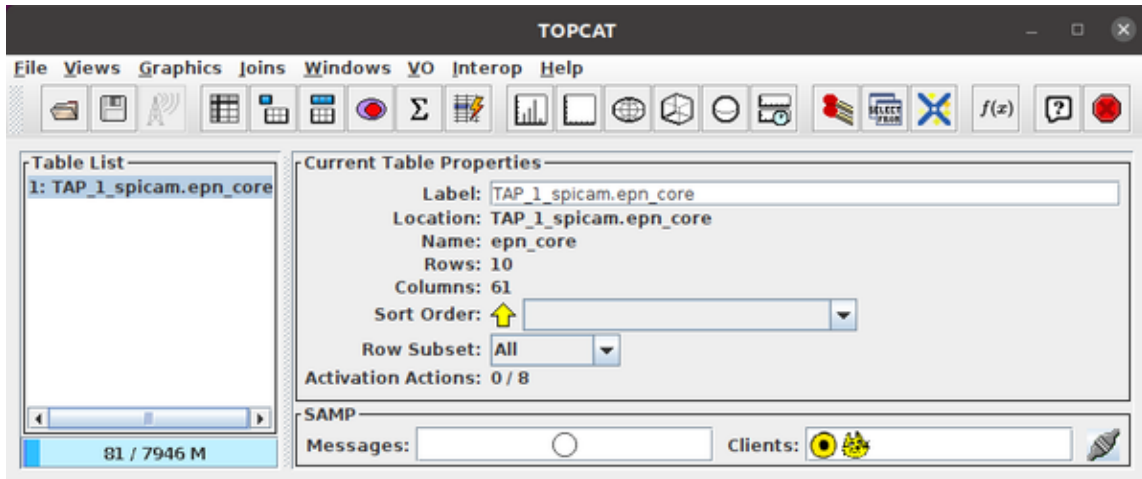
- Use the Table Access protocol  and search for SPICAM service :



- Then make an adql query on this service, here we want to obtain a subset of 10 granules of this service



- Click 'run query', it will load the subset of the epn\_core service on the main topcat window



## Using VESPA portal

You can also obtain the subset of your service using VESPA portal.

- Open Topcat
- Open [VESPA portal](#)
- Click on your service (here, SPICAM)
- Use the portal query criterions or ADQL to obtain your subset
- On the bottom of query page, click on All metadata > send tables

- Or, if you have selected the wanted granules manually, Metadata Selection > send tables

**VESPA** Virtual European Solar and Planetary Access Help -

Time	orbit288A1_temp_MCDsimulations	profile	Mars	2006-04-11T06:09:11.232	2006-04-11T06:09:11.232	http://vo.proje
Location	orbit288A1_co2dens_SPICAMmeasurements	profile	Mars	2006-04-11T06:09:11.232	2006-04-11T06:09:11.232	http://vo.proje
Spectral	orbit288A1_co2dens_MCDsimulations	profile	Mars	2006-04-11T06:09:11.232	2006-04-11T06:09:11.232	http://vo.proje
Illumination	orbit2779A1_temp_SPICAMmeasurements	profile	Mars	2006-03-11T16:56:34.079	2006-03-11T16:56:34.079	http://vo.proje
Data Reference	orbit2779A1_temp_MCDsimulations	profile	Mars	2006-03-11T16:56:34.079	2006-03-11T16:56:34.079	http://vo.proje
Other	orbit2779A1_co2dens_SPICAMmeasurements	profile	Mars	2006-03-11T16:56:34.079	2006-03-11T16:56:34.079	http://vo.proje
	orbit2779A1_co2dens_MCDsimulations	profile	Mars	2006-03-11T16:56:34.079	2006-03-11T16:56:34.079	http://vo.proje
	orbit2775A1_temp_SPICAMmeasurements	profile	Mars	2006-03-10T15:12:18.719	2006-03-10T15:12:18.719	http://vo.proje
	orbit2775A1_temp_MCDsimulations	profile	Mars	2006-03-10T15:12:18.719	2006-03-10T15:12:18.719	http://vo.proje

Showing 1 to 10 of 148 entries 4 rows selected Page 1 of 15

First Previous Next Last

Show 10 entries

Data Selection - Metadata Selection - All Data - All Metadata - Footprints-

Download  
Send Table

ADQL query:  
SELECT \* FROM spicam.epn\_core WHERE "mars\_year" = 28

VOTable Result

- The subset of the epn\_core table will be loaded on topcat

**TOPCAT**

File Views Graphics Joins Windows VO Interop Help

Table List  
1: spicam


Current Table Properties  
Label: spicam  
Location: samp:spicam  
Name: spicam  
Rows: 4  
Columns: 61  
Sort Order: ↑  
Row Subset: All  
Activation Actions: 0 / 6

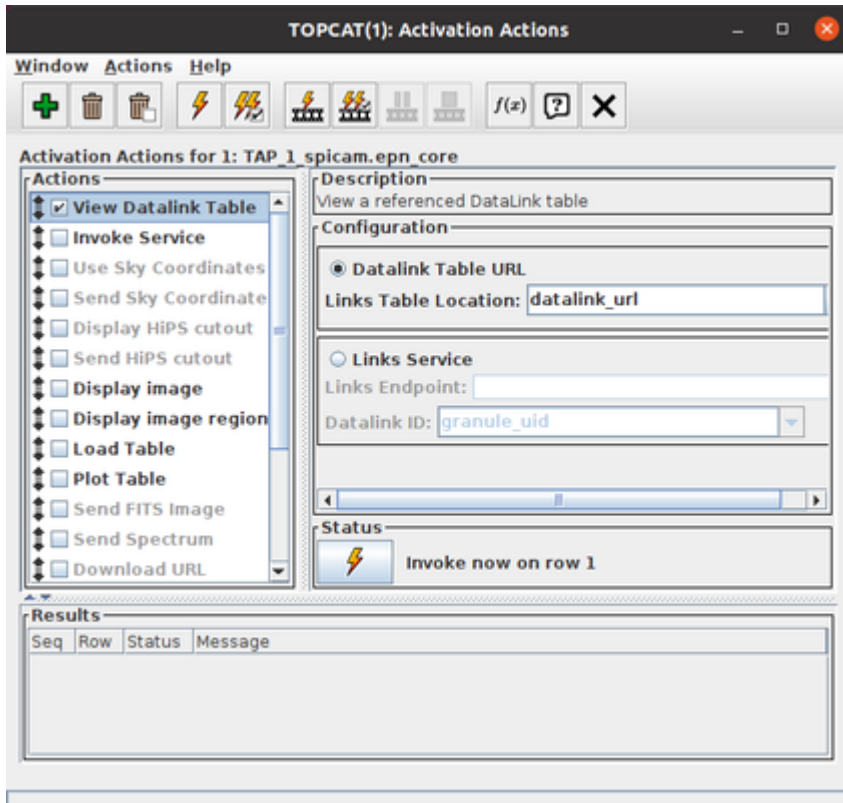
SAMP  
Messages: Clients:

### Use the datalink service

Now, to interrogate the datalink service :

- Open the table of the epn\_core subset previously loaded on one side.

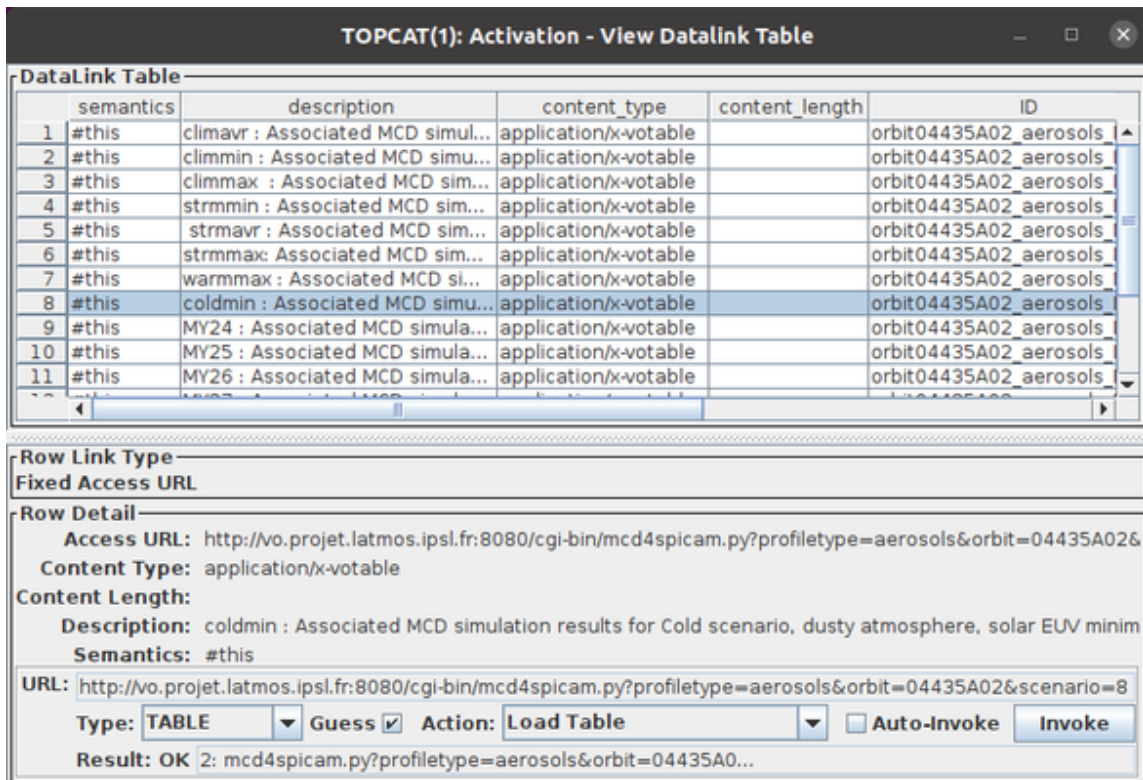
- On the other side, open the action windows by clicking the action  button.
- Check 'View Datalink Table'



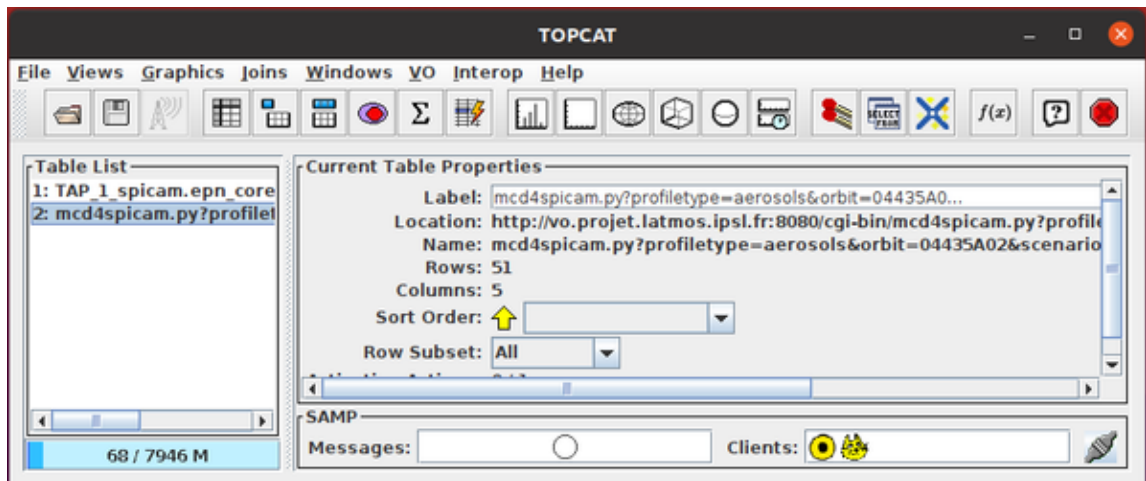
- Click on one row of the epn\_core table, the datalink table will be displayed
- In this service, the datalink service is a list of links that points on votables, you can click on a type of datalink in the list. For this example, we will use the "coldmin" type of link. Then, select the action you want to do with this link. In this case, we want to load the votable.

#### Use the datalink service on one row

To load the datalink's "coldmin" votable for the selected granule of the epn\_core table, click 'invoke'.



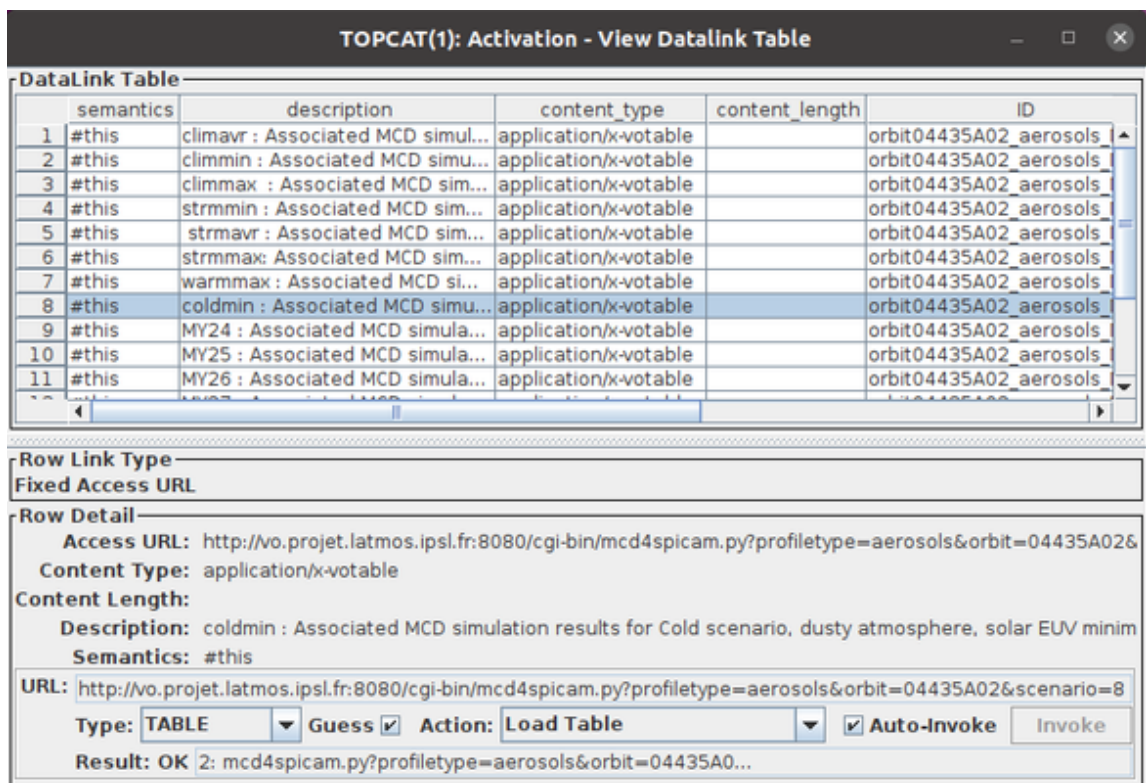
- It will load the associated votable on topcat



Use the datalink service on a whole sample

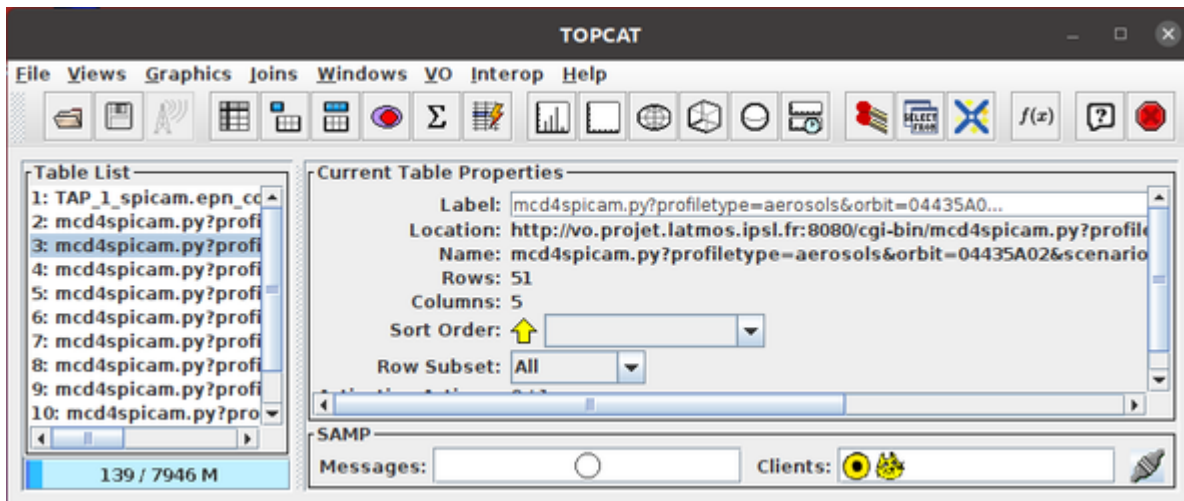
To load all votables corresponding to "coldmin" datalink for the whole selection of the epn\_core service :

- Check the 'Auto-Invoke' checkbox on the datalink table



- Return on the action window and click the "invoke selected action on all rows" button 

All corresponding votables will be loaded on topcat



### To go futher

You can select other types of actions to do with the datalinks on the datalink window.

The "auto Invoke" button is not available for datalinks with a form.